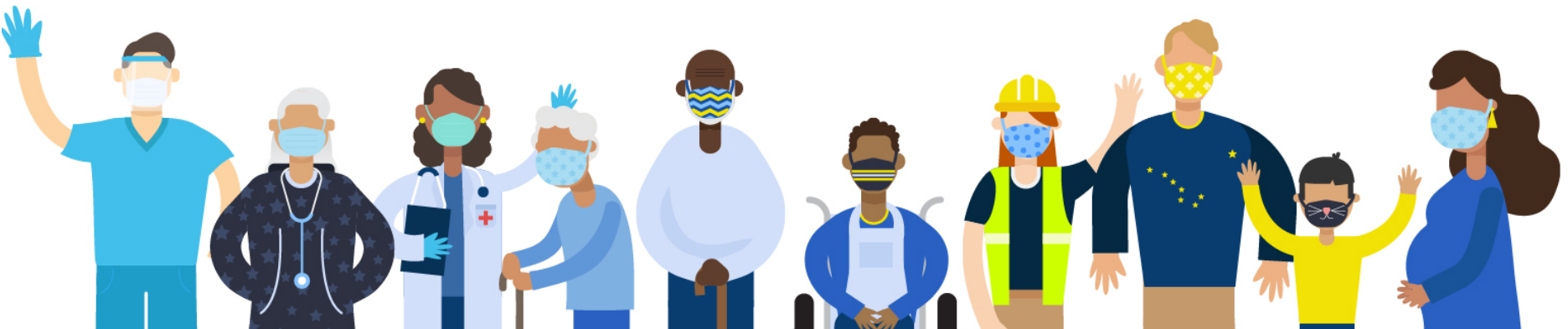




COVID-19 Update

Dr. Anne Zink, Chief Medical Officer
February 2, 2021



COVID-19 Data Hub

Pandemic to Date: Updated February 1, 2021



AK COVID-19 Cases Dashboard

All data are updated once daily by noon and are current through the previous day

Alert Levels (Map Layers Must be Selected Manually)



Default layer: Alaska resident cases. For more layer options select the highlighted icon in the top right corner of the map.

Alert Level

7-Day Rate

Cumulative Cases

Age

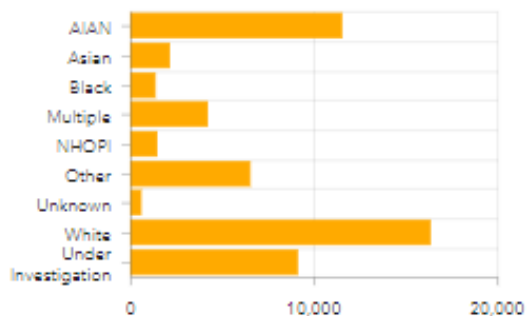
Gender

Race

Ethnicity

Statewide Cases by Race

Filterable by residence status only



Total Cases

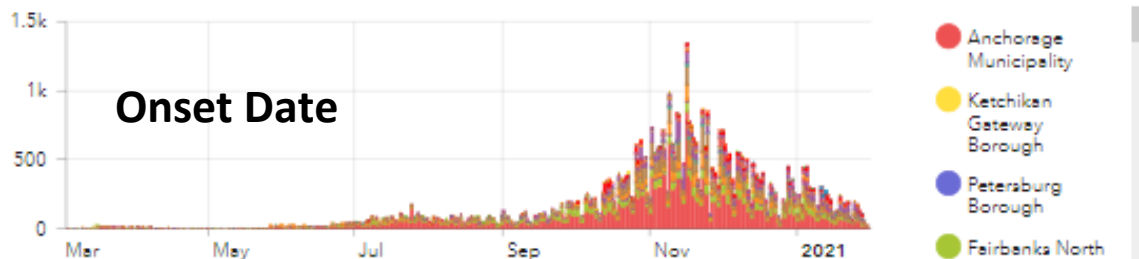
52,668

New Cases Yesterday

63

Updated Daily by Noon

COVID-19 Cases by Onset Date*



*Includes "confirmed" and "probable". Missing onset dates are substituted with report, hospitalization, or specimen collection date (whichever is earlier); dates will change with confirmed onset date.

Report Date

Onset Date

Acquisition of Disease

Hospitalization Date

Deaths

Hospitalizations

1,179

Total count (does not reflect current stays)

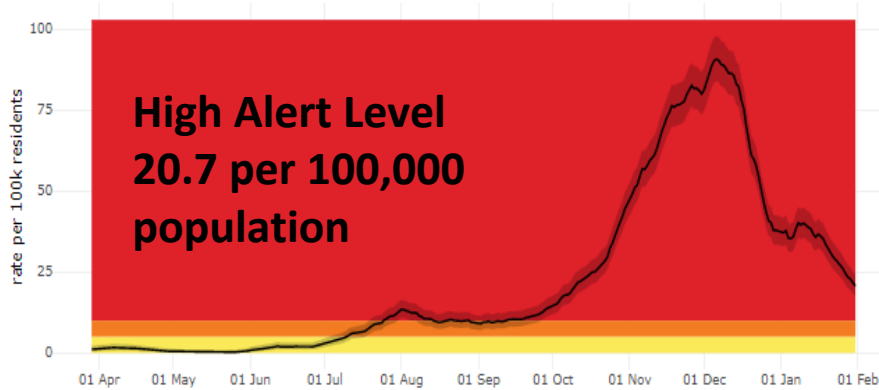
Deaths

260

COVID-19 Data Hub

Pandemic to Date: Updated February 1, 2021

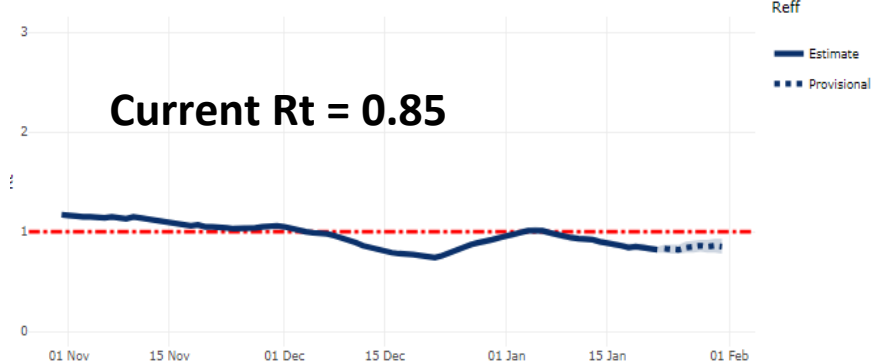
Average daily case rate (14 day window) per 100,000 population, Statewide



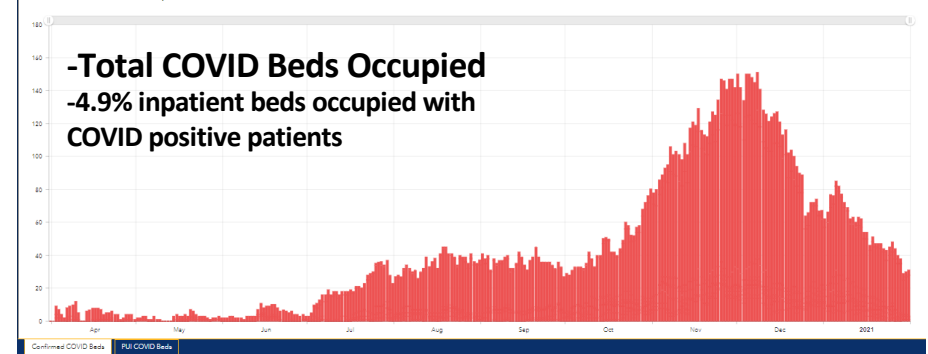
Statewide Percentage of Daily Tests with Positive Results (Seven day rolling average)



Time-varying reproductive number (R_t), Statewide

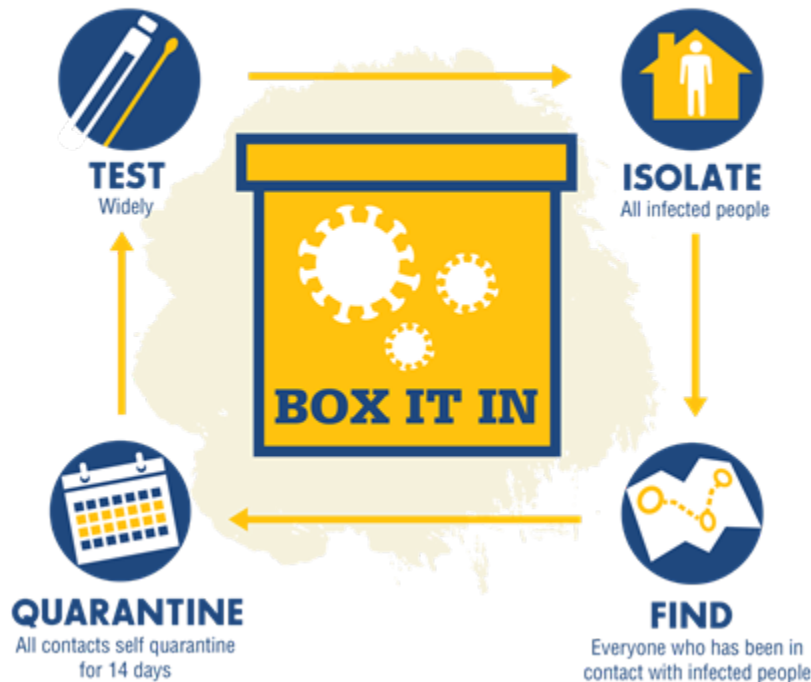


Total Confirmed COVID Beds Occupied



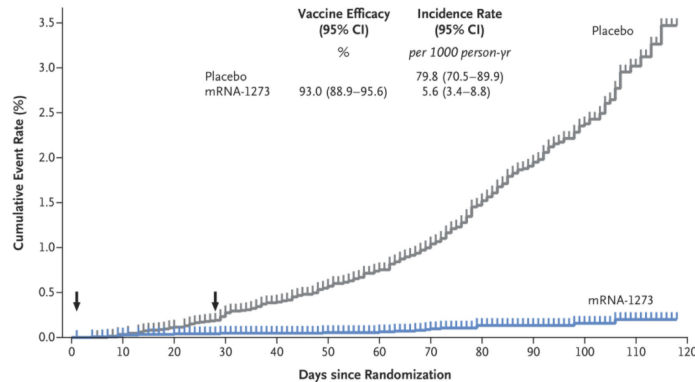
Testing and Contact Tracing

Keep a lid on COVID.

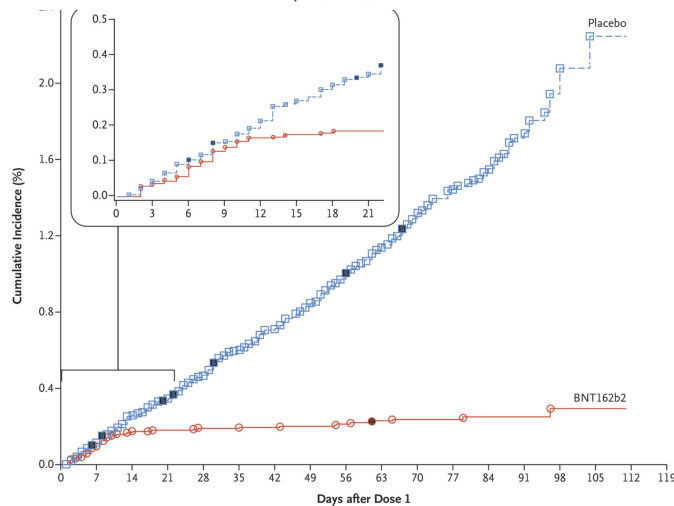


- Workforce expanded to about 500 contact tracers.
- Cases called the day they are entered into the database.
- Average statewide of three days between testing and a call from a contact tracer.
- Only about 2% decline to participate after picking up a contact tracer's call.

Safe and Highly Effective Vaccines



- Moderna vaccine = **94.1%** effective at preventing COVID-19

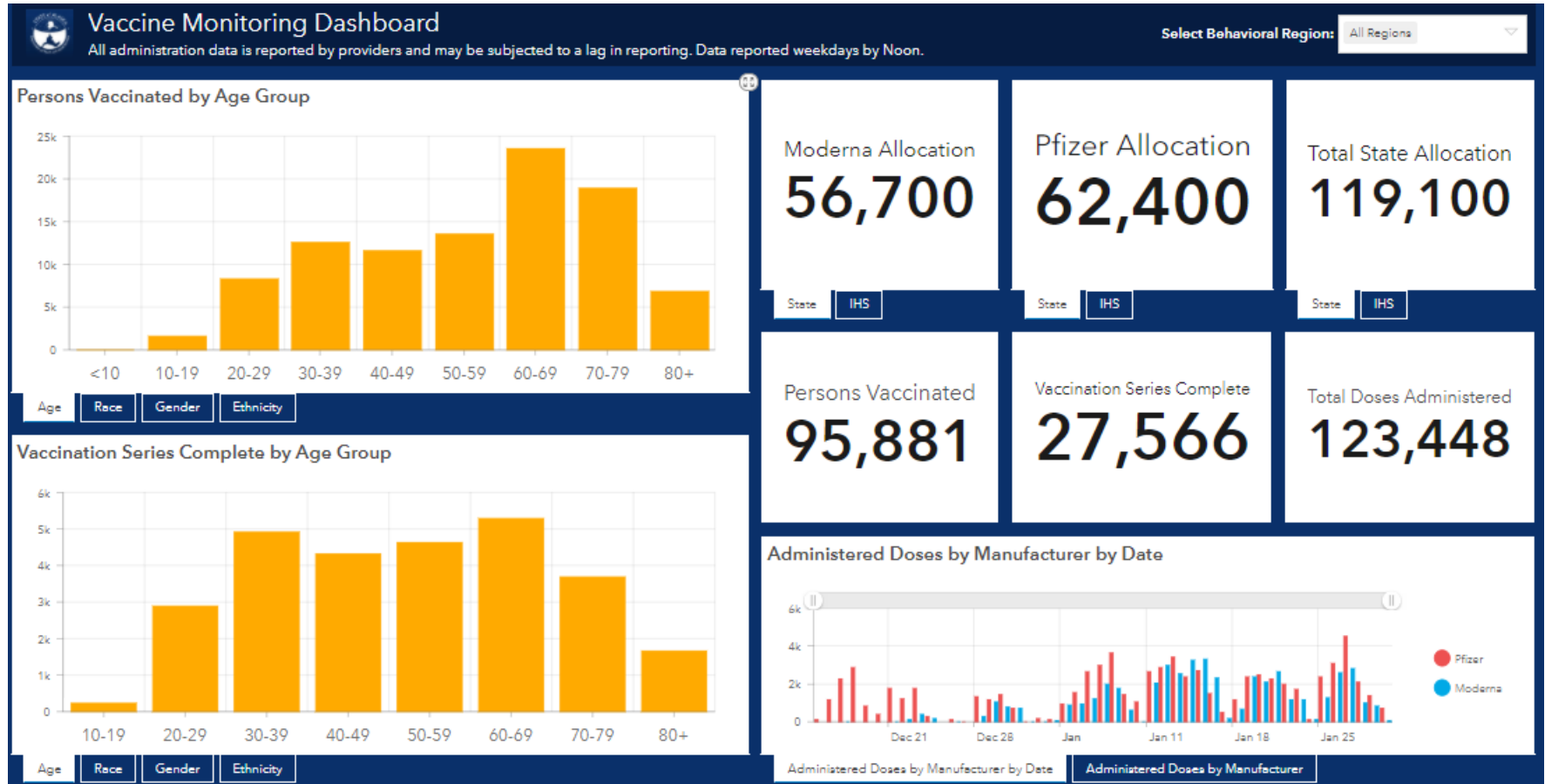


- Pfizer vaccine = **95%** effective at preventing COVID-19

Vaccines also protect you against severe disease. Protection against spread of transmission is still not known.

COVID-19 Vaccine Dashboard

Updated February 1, 2021



Vaccine Eligibility

Who is eligible now?

Phase 1b, Tier 1

Persons aged 65 years and older

Phase 1a, Tier 3

Workers in health care settings

Must meet all of the following criteria:

- Have direct human patient contact, or have direct contact with infectious materials from patients, **AND**
- Provide essential services in a hospital, clinic, home, or community-based setting that cannot be offered remotely or performed via telework; **AND**
- Provide essential health care service in a health care setting that cannot be postponed without serious negative impact to the patient's health

Phase 1a, Tier 2

Frontline EMS and Fire Service personnel providing medical services, who are frequently exposed to COVID-19 patients

Community Health Aides/Practitioner

Health care workers providing vaccinations to identified populations in Phase 1a

Phase 1a, Tier 1

Long term care facility staff and residents

Hospital-based frontline health care workers and hospital personnel



Vaccine Eligibility

Who is eligible next?

Phase 1b Tier 2

Not yet open. Timeline to be determined.

- › [Frontline essential workers](#) aged 50 years and older
- › People living or working in other [congregate settings](#) not covered in Phase 1a

Phase 1b Tier 3

Not yet open. Timeline to be determined.

- › Persons aged 55-64 years
- › [Frontline essential workers](#) with 2 or more [high-risk health conditions](#)
- › All persons aged 16 and older living in "[unserved communities](#)"

Phase 1b Tier 4

Not yet open. Timeline to be determined.

- › Persons aged 50 years and older with 2 or more [high-risk health conditions](#)
- › [Frontline essential workers](#) not covered in previous tiers

Frontline Essential Workers

1. Frontline essential workers are defined as people who are working in sectors essential to the functioning of society and are at substantially higher risk of exposure to SARS-CoV-2 because their work-related duties must be performed on-site and involve being in close proximity (<6 feet) to the public or to coworkers.

- Education (PreK–12 educators and school staff, childcare workers and support staff, including Indigenous language and culture educators);
- First responders and public safety personnel, including state troopers, public safety officers, police, firefighters, and Office of Children’s Services staff and public health workers in direct contact with individuals and families not vaccinated in Phase 1a;
- Food and agriculture (e.g., seafood, food distributors);
- Grocery store workers;
- Public transit workers, including rural aviation workers serving communities defined as essential air services, and rural cab service workers;
- U.S. Postal Service workers and contract rural postal workers including mail planes;
- Utility and power workers – rural communities; and
- **Water and wastewater – rural communities**

Note: Rural is defined as communities with a population less than 10,000 and off the road system. The “road system” is defined as any community connected by a road to the Steese, Elliot, Dalton, Seward, Parks, Klondike, Richardson, Sterling, Glenn, Haines, or Top of the World Highways.

Thank you, Alaskans!

Alaskans have come together: providers and volunteers, families and friends, municipal and tribal leader. Alaskans have risen to the challenge in the most amazing ways.



Partnerships

Alaska Tribal Health System, Department of Veterans Affairs, Department of Defense



Vaccine Appointments Available

Help our Seniors and Elders

date	location	address	appts	vaccine
2/05	Fairbanks Regional Public Health Center	2010 2nd Ave Carlson Center, Fairbanks 99701	811	Moderna
2/07	Alaska Airlines Center	3550 Providence Drive, Anchorage 99508	764	Pfizer-BioNTech
2/11	Alaska Airlines Center	3550 Providence Drive, Anchorage 99508	763	Pfizer-BioNTech
2/09	Alaska Airlines Center	3550 Providence Drive, Anchorage 99508	761	Pfizer-BioNTech
2/06	Alaska Airlines Center	3550 Providence Drive, Anchorage 99508	433	Pfizer-BioNTech
1/29	Kodiak Public Health Center	250 West Marine Way, Kodiak 99615	277	Pfizer-BioNTech
2/13	Soldotna Professional Pharmacy	426 W Redoubt, Soldotna 99669	277	Pfizer-BioNTech
2/04	Alaska Airlines Center	3550 Providence Drive, Anchorage 99508	180	Pfizer-BioNTech
2/10	Harry Race Pharmacy at Sitka Fire Hall	209 Lake Street, Sitka 99835	108	Moderna
2/17	Harry Race Pharmacy at Sitka Fire Hall	209 Lake Street, Sitka 99835	108	Moderna
2/06	Soldotna Professional Pharmacy	450 Marathon Rd, Kenai 99611	62	Pfizer-BioNTech
2/06	Soldotna Professional Pharmacy	450 Marathon Rd, Kenai 99611	49	Moderna
2/06	Ron's Apothecary Shoppe	9101 MENDENHALL MALL ROAD, Juneau 99801	24	Moderna
2/05	Ron's Apothecary Shoppe	9101 MENDENHALL MALL ROAD, Juneau 99801	12	Moderna
2/10	Soldotna Professional Pharmacy	299 North Binkley Street, Soldotna 99669	5	Pfizer-BioNTech
2/01	Ketchikan Public Health Center	605 Gateway Court, Ketchikan 99901	4	Moderna

<http://covidvax.alaska.gov>



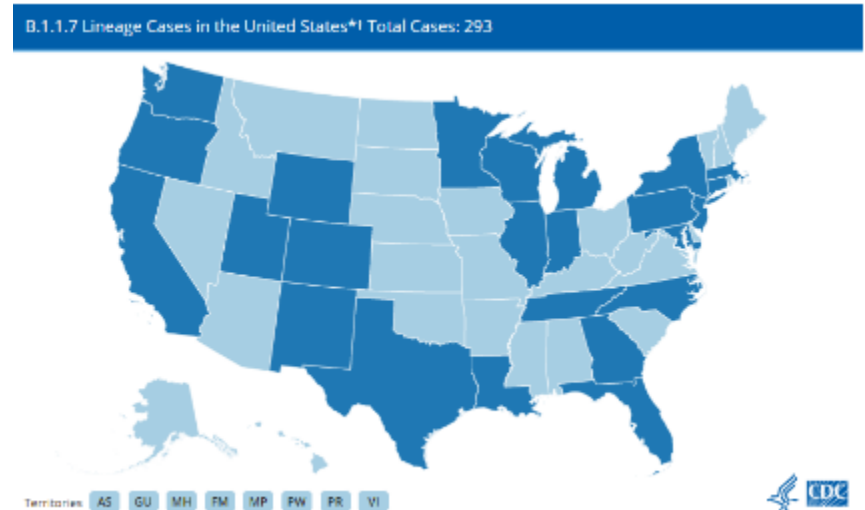
Need assistance making your
COVID-19 vaccine appointment?

Call the COVID Vaccine Helpline:

 **907-646-3322**

COVID-19 Variant Strains

- Alaska will be added to CDC map. Updates Monday, Wednesday and Friday.
- Alaska detected strain from recently completed sequencing. Sequencing takes time.
- Test specimen collected Dec. 20, individual isolated after testing positive. One close contact also isolated.
- Alaska has been sequencing SARS-CoV-2 viral genome from positive cases since spring 2020 to monitor circulating strains in Alaska. To date, 4-5% of positive cases have been sequenced.



<https://www.cdc.gov/coronavirus/2019-ncov/transmission/variant-cases.html>

<http://dhss.alaska.gov/dph/Epi/id/Pages/COVID-19/variants.aspx>

http://dhss.alaska.gov/News/Documents/press/2021/DHSS_PressRelease_Variant_20210126.pdf

Keep it up!



Maintain COVID protective measures

Stay Safe and Strong, Alaska

